



COMPARE. YOU'LL TAKE TACO.

Model 0011 High Velocity Circulator



- **Motor Winding Protector—Exclusive ACB Anti-Condensate Baffle with Ambient Air Flow Protects Motor Windings Against Condensate Buildup**
- **Unique Replaceable Cartridge Design—Field Serviceable/RP Parts Available**
- **Quiet, Efficient Operation—No Maintenance/No Mechanical Seals**
- **Compact Design—High Velocity Performance**
- **Direct Drive—Low Power Consumption**
- **Universal Flange to Flange Dimensions—Cast Iron or Bronze Construction**
- **Manufactured in a Variety of Sizes to Match System Requirements**
- **Residential and Light Commercial Applications**

TACO, INC.

1160 Cranston Street, Cranston, RI 02920
Telephone (401) 942-8000 Telex: 92-7627

TACO (Canada) LTD.

1310 Aimco Blvd., Mississauga, Ontario L4W 1B2
Telephone (416) 625-2160 Telex: 06-961179

"00" Series Cartridge Circulators

Submittal Data Information

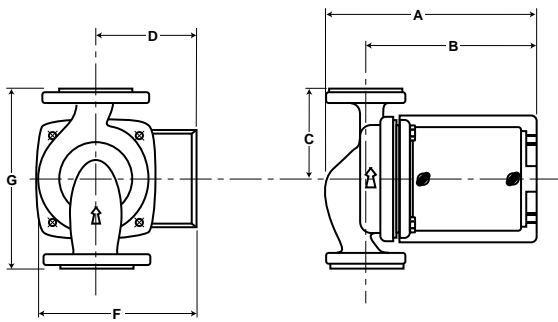


APPLICATION

The Taco 0011 high velocity/high head circulator is designed for residential and light commercial closed loop hydronic systems and open loop domestic fresh water systems. This circulator is available in cast iron or bronze construction. The 0011 has the exclusive "00" cartridge design and ACB motor protector. The "00" cartridge contains all the moving parts. Replacing it virtually rebuilds the circulator. The unique ACB anti-condensate baffle with ambient air flow prevents the buildup of condensate on the motor windings when pumping chilled water. The 0011 has

a high head medium flow characteristic for applications in high pressure drop boilers, fan coil units, heat exchangers, large radiant heating systems, and heat recovery units/earth loop systems. The quiet, direct-drive 0011 high velocity series contains no mechanical seal and requires no maintenance. This compact design has low power consumption and is ideal for those high efficiency jobs that have space requirements. Because universal flange to flange length and orientation are featured, the 0011 may easily replace other models.

PUMP DIMENSIONS



A		B		C		D		F		G		SHIPPING WEIGHT	
IN.	MM	IN.	MM	IN.	MM	IN.	MM	IN.	MM	IN.	MM	LBS.	KG
7 ⁵ / ₈	194	6 ⁷ / ₃₂	158	3 ¹ / ₄	82	3 ³ / ₄	95	6	152	6 ¹ / ₅	165	12.0	5.5

SPECIFICATIONS UL & CSA LISTED

ACB BAFFLE	Non-Ferrous
CASING	Cast Iron or Bronze
IMPELLER	Non-Metallic
SHAFT	Ceramic
BEARINGS	Carbon
CONNECTIONS	Flanged 3/4", 1", 1 1/4", 1 1/2"
PRESSURE RATING	125 psi Maximum
TEMPERATURE RATING	220°F Maximum
MOTOR TYPE	Permanent Split Capacitor
HP	1/7 HP @ 3250 RPM
ELECTRICAL CHAR:	115/60/1
	2.0 Amp Rating
	Impedance Protected

PERFORMANCE FIELD

